

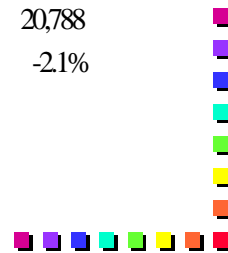
Smart Numbers



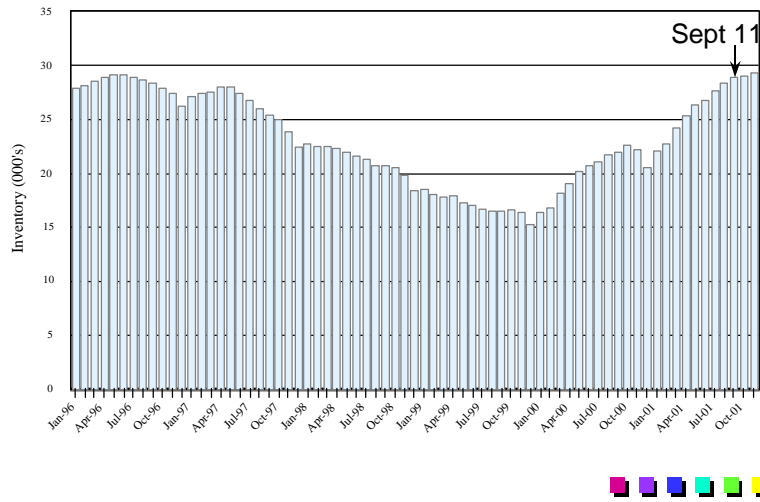
Atlanta Metro's Go - Go 90's

7 Year Sales Trend

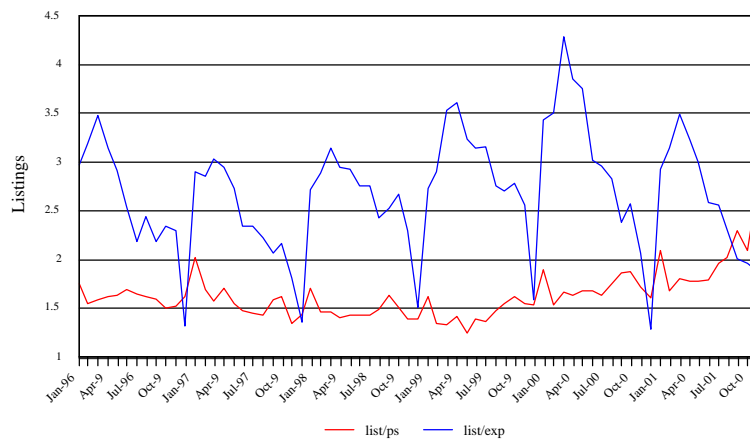
<u>1995</u>	<u>1996</u>	<u>1997</u>	<u>1998</u>	<u>1999</u>	<u>2000</u>	<u>2001</u>
24,881	28,616	30,722	33,992	39,923	42,466	20,788
	15.0%	7.4%	10.6%	17.4%	6.4%	-2.1%



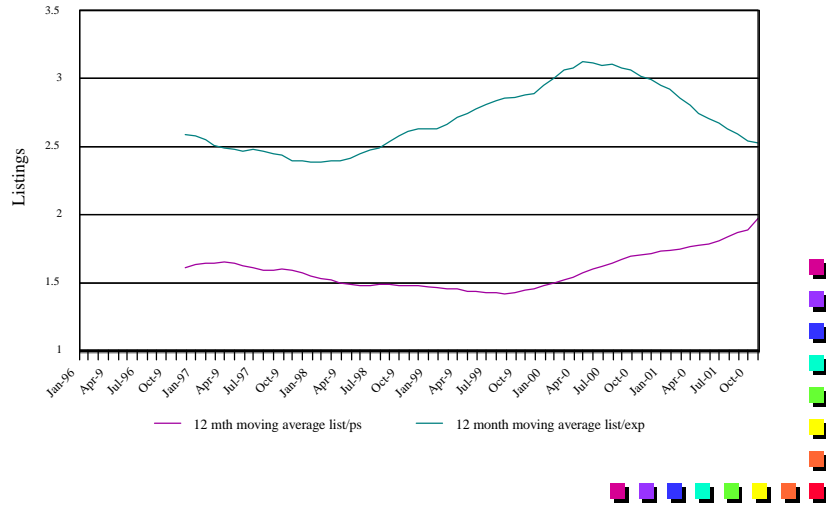
Housing Inventory Trending



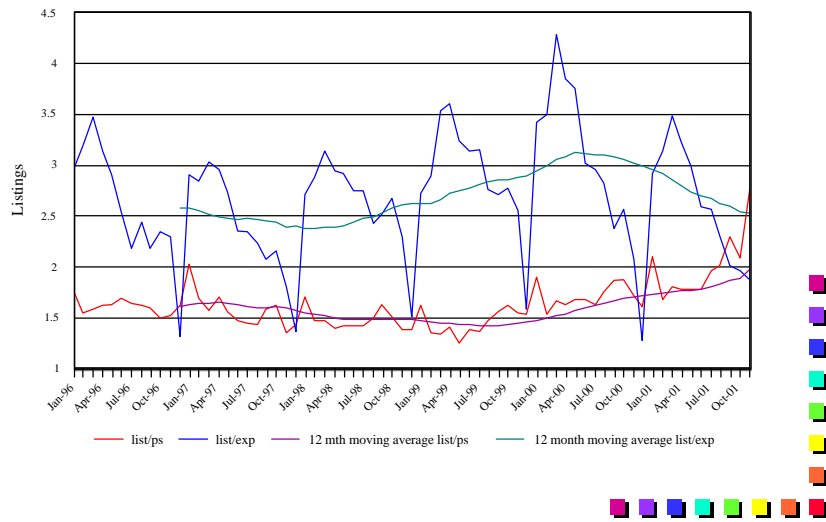
Inventory Ratios - Monthly



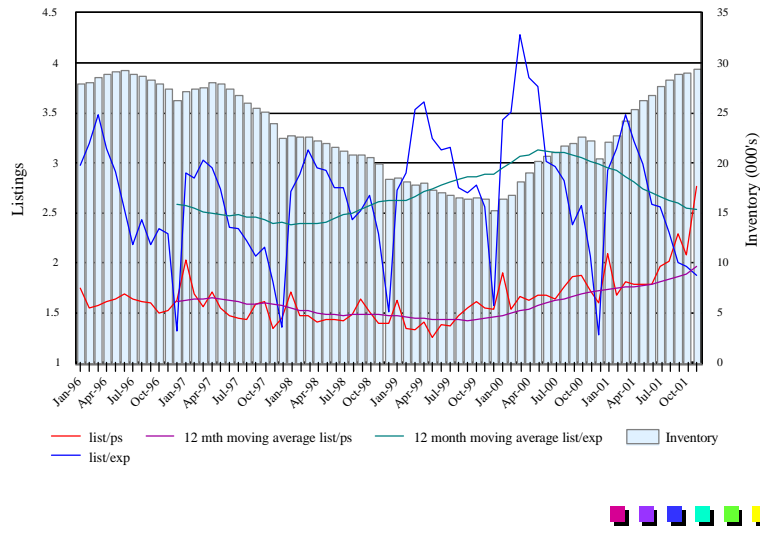
Inventory Ratios - 12 Mth Moving Averages



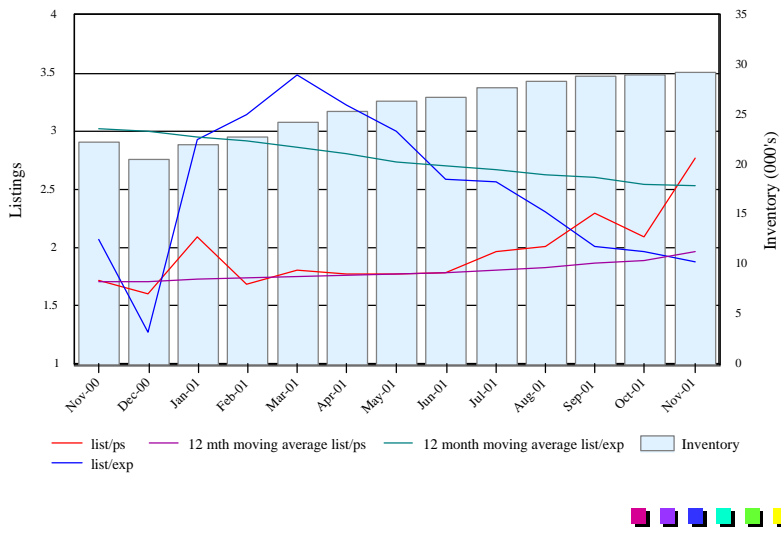
Inventory Ratios



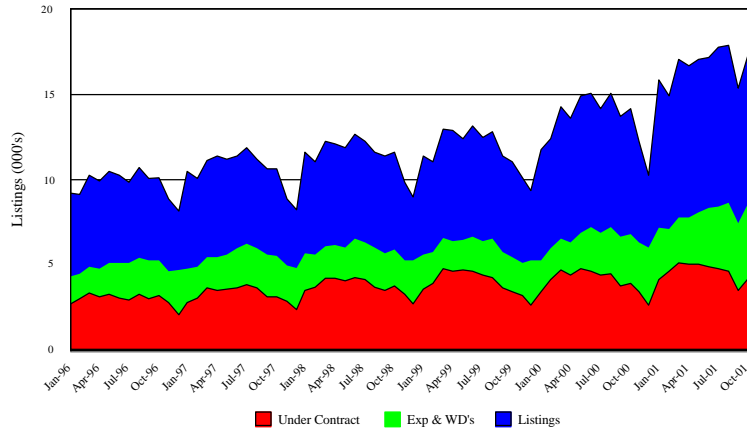
Inventory Ratios vs. Inventory



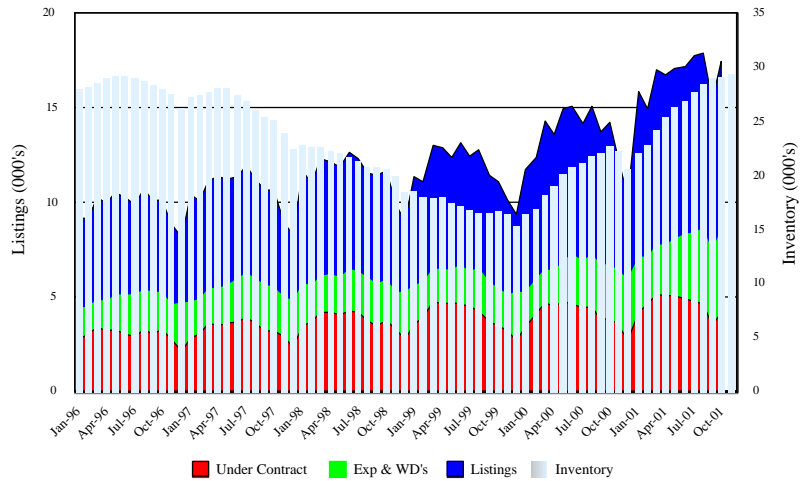
Listing Ratio vs. Inventory



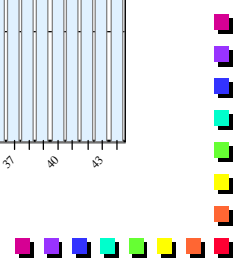
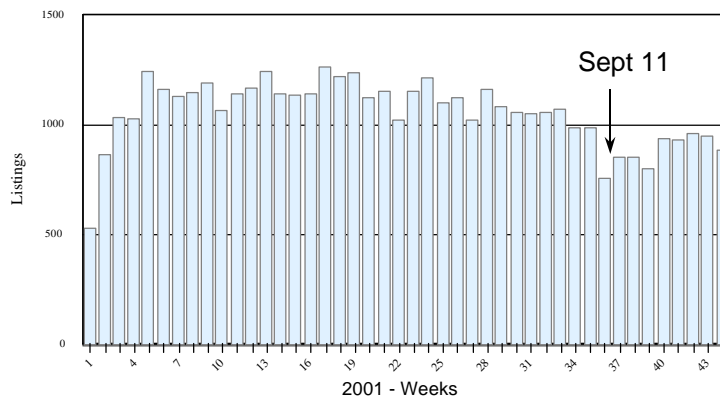
Inventory Trending by Status



Inventory Trending vs Inventory Status



Homes Going Under Contract 2001



Interest Rate Trend - Monthly Average

